

APRIL 1, 2022

Mid-Basin Sediment Diversion Program

ADDRESSING LOUISIANA'S LAND LOSS CRISIS

BRAD BARTH, PROGRAM MANAGER



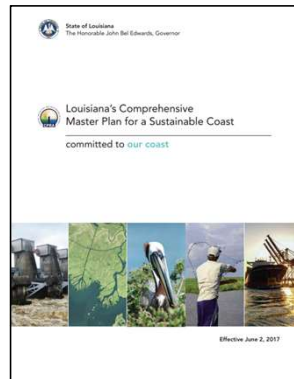
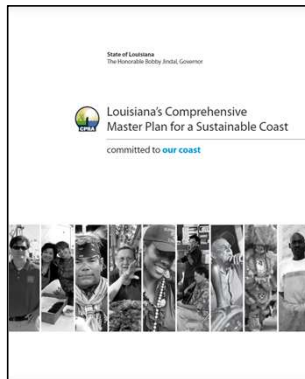
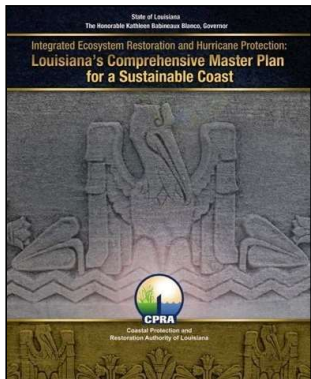
Coastal Protection and Restoration Authority

Single state entity with authority to articulate a clear statement of priorities to achieve comprehensive coastal protection for Louisiana.

Mandate is to develop, implement, and enforce a comprehensive coastal protection and restoration master plan.



Louisiana's Comprehensive Master Plan for a Sustainable Coast



ARTICULATES AN INTEGRATED
AND COMPREHENSIVE VISION

PROVIDES A LIST OF
PROJECTS

RESOURCE CONSTRAINED

UPDATED EVERY 6 YEARS

Coastal Master Plan

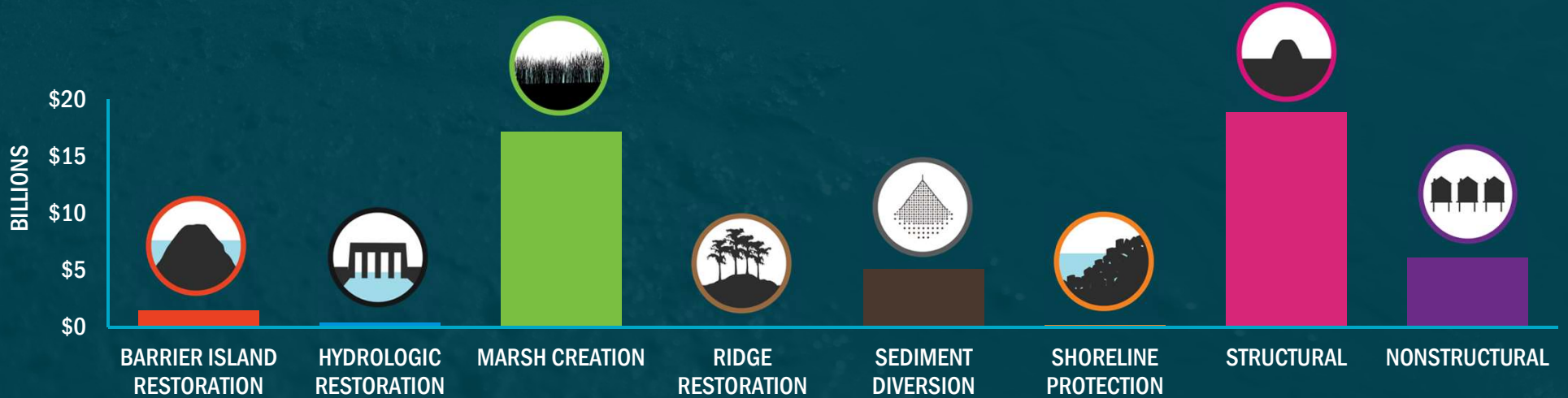
\$50B total funding

RESTORATION

\$25B

RISK REDUCTION

\$25B



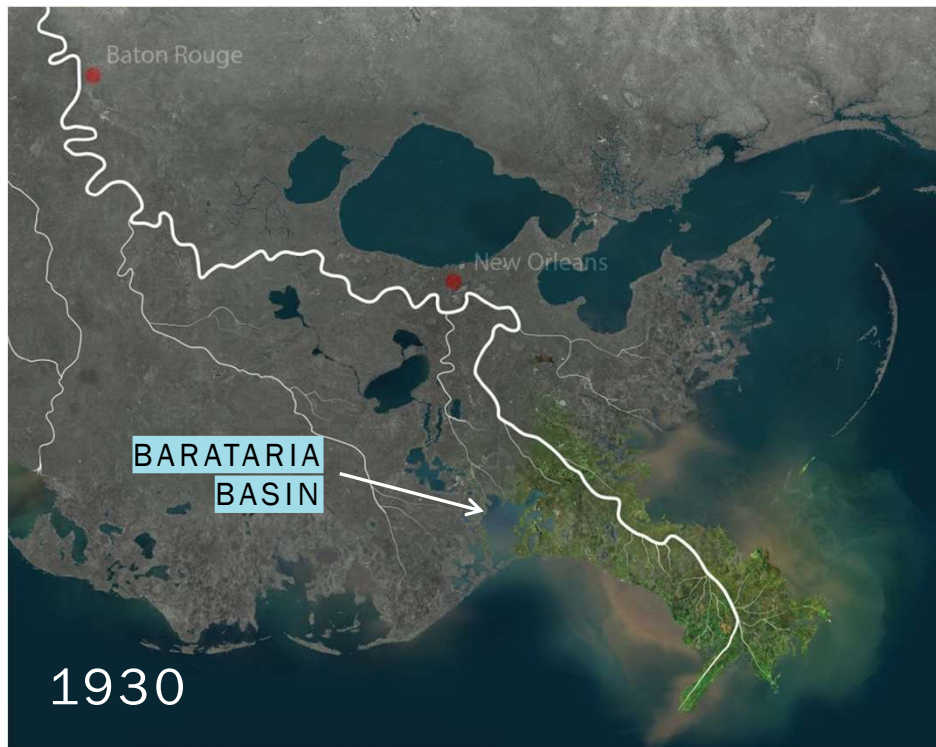
Causes of Land Loss

SEA LEVEL RISE, SUBSIDENCE, DISCONNECTION TO RIVER, CANALS/CHANNELS, AND OIL SPILL



Mississippi River Levee System

GREAT FLOOD OF 1927, SUBSEQUENT LEVEEING





1927 — 1928 — 1973 — 1981 — 1982 — 1987 — 1993 — 1994 — 1995 — 1996 — 1998 — 2004 — 2005 — 2006 — 2007 — 2012 — 2016 — 2017 — 2018 — 2019



Flood Control in the Mississippi Valley in Its Relation to Louisiana Fisheries (Percy Visser)
 Louisiana Wetlands and the Value of Their Wild Life and Fishery Resources (Percy Visser)
 ENVIRONMENTAL RISKS AND MULTI-USE MANAGEMENT PLAN FOR SOUTH-CENTRAL LOUISIANA
 Report on Special Projects for Coastal Louisiana
 Atchafalaya Basin Floodway System, Louisiana
 Saving Louisiana's Coastal Wetlands (The Need for a Long-Term Plan of Action)
 CWPPRA The Louisiana Coastal Wetlands Restoration Plan
 An Environmental-Economic Blueprint for Restoring the Louisiana Coastal Zone: The State Plan
 Lake Pontchartrain Basin Foundation Comprehensive Management Plan (Phase III)
 BTNEP Barataria-Terrebonne National Estuary Program
 Coast 2050: Toward a Sustainable Coastal Louisiana
 LCA Near Term Plan
 The Multiple Lines of Defense Strategy to Sustain Coastal Louisiana (Lake Pontchartrain Basin Foundation) (John Lopez)
 A New Framework for Planning the Future of Coastal Louisiana After the Hurricanes of 2005
 Comprehensive Recommendations Supporting the Use of the Multiple Lines of Defense Strategy to Sustain Coastal Louisiana
 Louisiana's Comprehensive Master Plan for a Sustainable Coast (CPRA)
 Deepwater Horizon Oil Spill Final Programmatic Damage Assessment and Restoration Plan and Final Programmatic Environmental Impact Statement
 Louisiana's Comprehensive Master Plan for a Sustainable Coast (CPRA)
 Strategic Restoration Plan and Environmental Assessment #2: Restoration of Wetlands, Coastal, and Nearshore Habitats in the Barataria Basin, Louisiana (LA TIC)
 BTNEP Comprehensive Conservation and Management Plan



A Long-Term, Comprehensive Management Plan for Coastal Louisiana (Ivor van Heerden)



(White Paper) The State of Louisiana's Policy for Coastal Restoration Activities



America's Wetland & BP



Louisiana's Comprehensive Master Plan for a Sustainable Coast (CPRA)



Mississippi River Gulf Outlet (MRGO) Channel Restoration and Mitigation Plan and Addendum



LACPR Louisiana Coastal Protection and Restoration

COASTAL RESTORATION PLANNING IN LOUISIANA

- Mississippi River Diversions of Freshwater and Nutrients
- Sediment Diversions



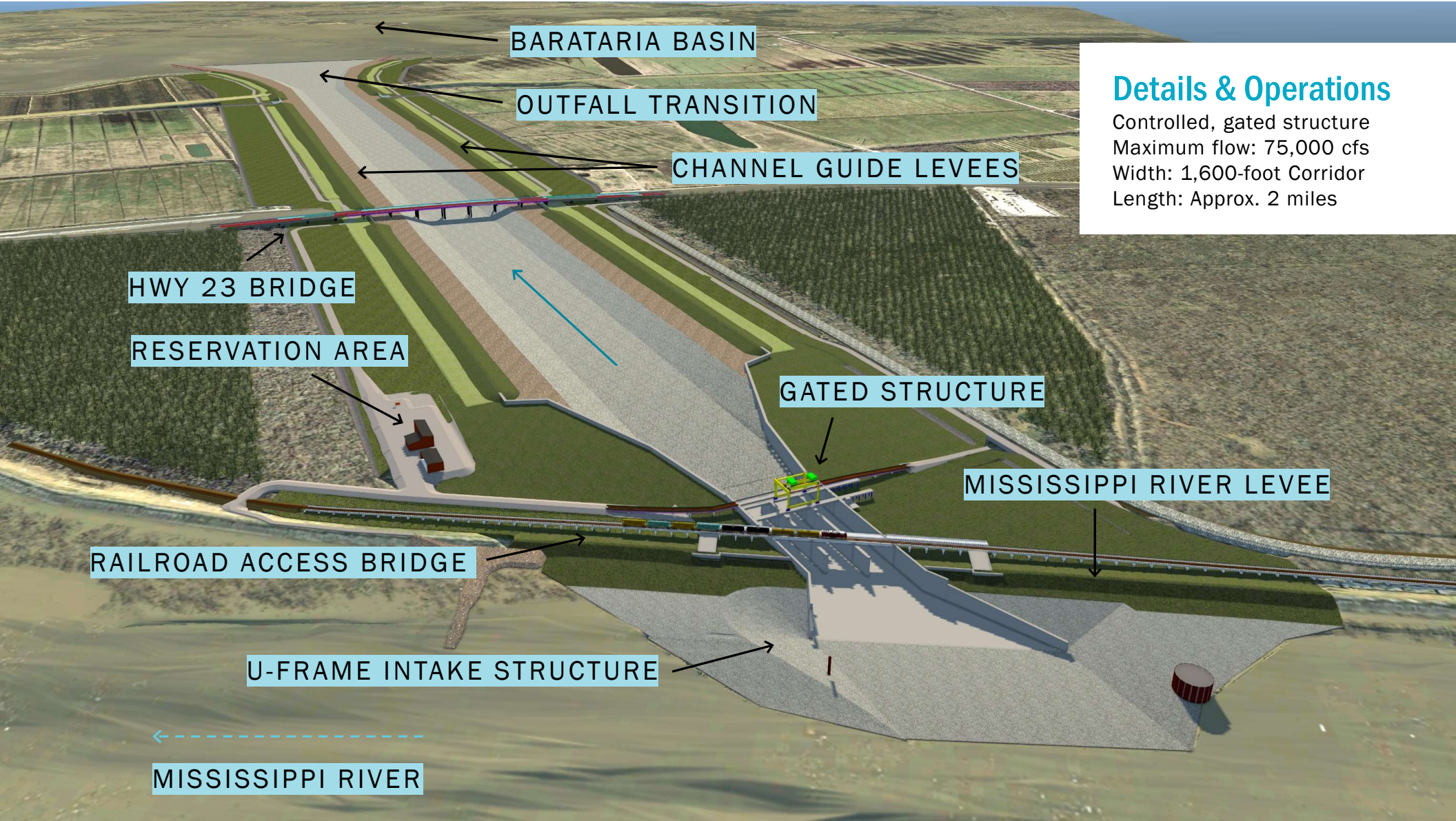
Reconnecting the River



Mid-Barataria Sediment Diversion







BARATARIA BASIN

OUTFALL TRANSITION

CHANNEL GUIDE LEVEES

HWY 23 BRIDGE

RESERVATION AREA

GATED STRUCTURE

MISSISSIPPI RIVER LEVEL

RAILROAD ACCESS BRIDGE

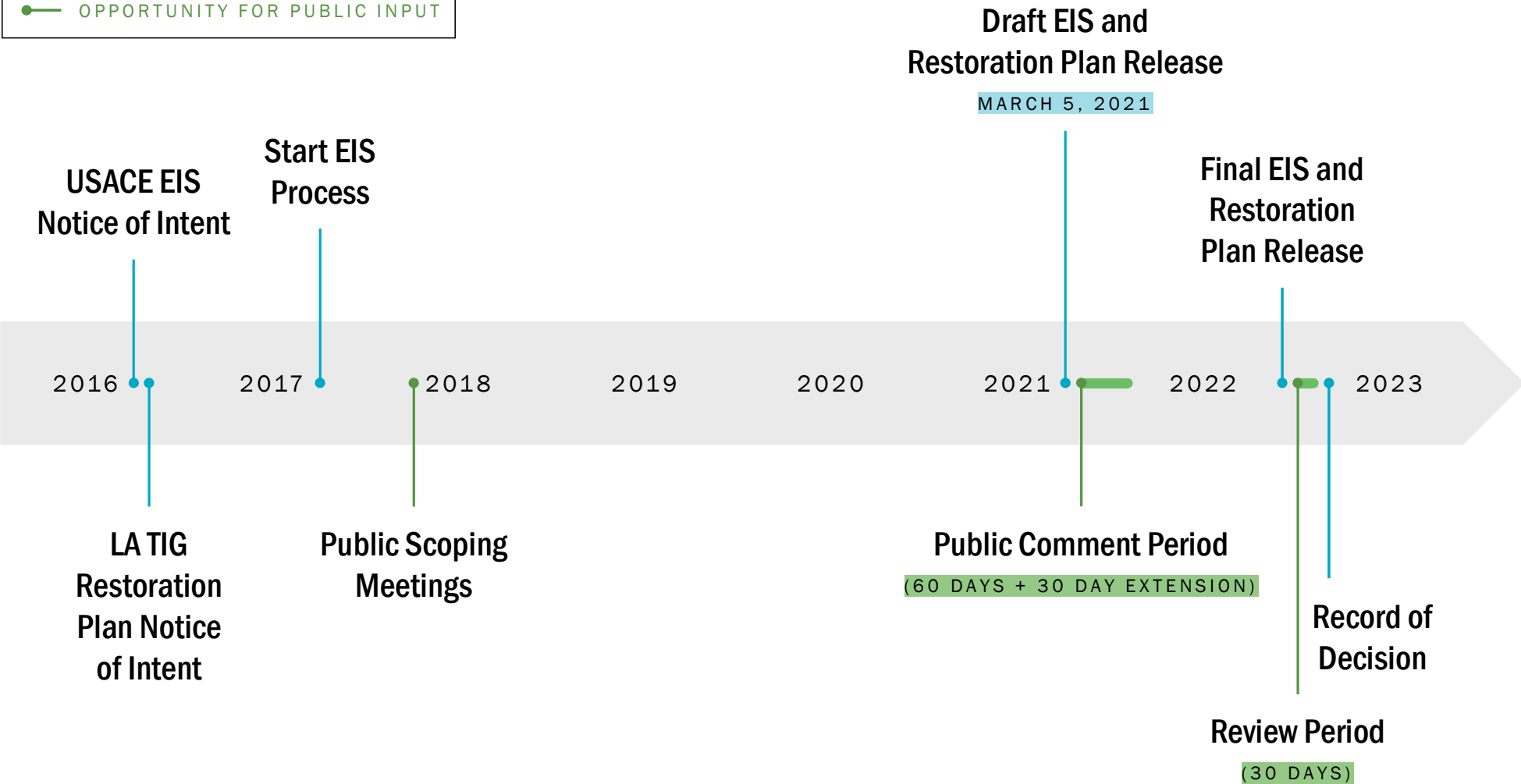
U-FRAME INTAKE STRUCTURE

MISSISSIPPI RIVER

Details & Operations

Controlled, gated structure
Maximum flow: 75,000 cfs
Width: 1,600-foot Corridor
Length: Approx. 2 miles

● OPPORTUNITY FOR PUBLIC INPUT



EIS: Environmental Resources Evaluated

- Noise
- Oil and gas resources
- Prime Farmland
- Public Safety (Flood Risk Reduction)
- Recreation (including fishing)
- Soils/Sediment (River and Basin)
- Socioeconomic (population, tax revenue, housing, etc.)
- Storm Surge/Flooding
- Threatened and Endangered Species (T&E)
- Water Quality (salinity/nutrients)
- Wetlands and Waters of the U.S.
- Aesthetic and Visual Resources
- Air Quality
- Aquatic Resources
- Terrestrial Resources
- Commercial Fisheries (industry impacts)
- Cultural Resources
- Environmental Justice (EJ)
- Essential Fish Habitat (EFH)
- Groundwater
- Land Use
- Marine Mammals
- Navigation (deep draft and tows)

Organizations Involved

USACE

Permitting authority

Developed DEIS, FEIS

Facilitates public comment process (public meetings, accepting official comment)

CPRA

Permit applicant

State agency responsible for engineering and design

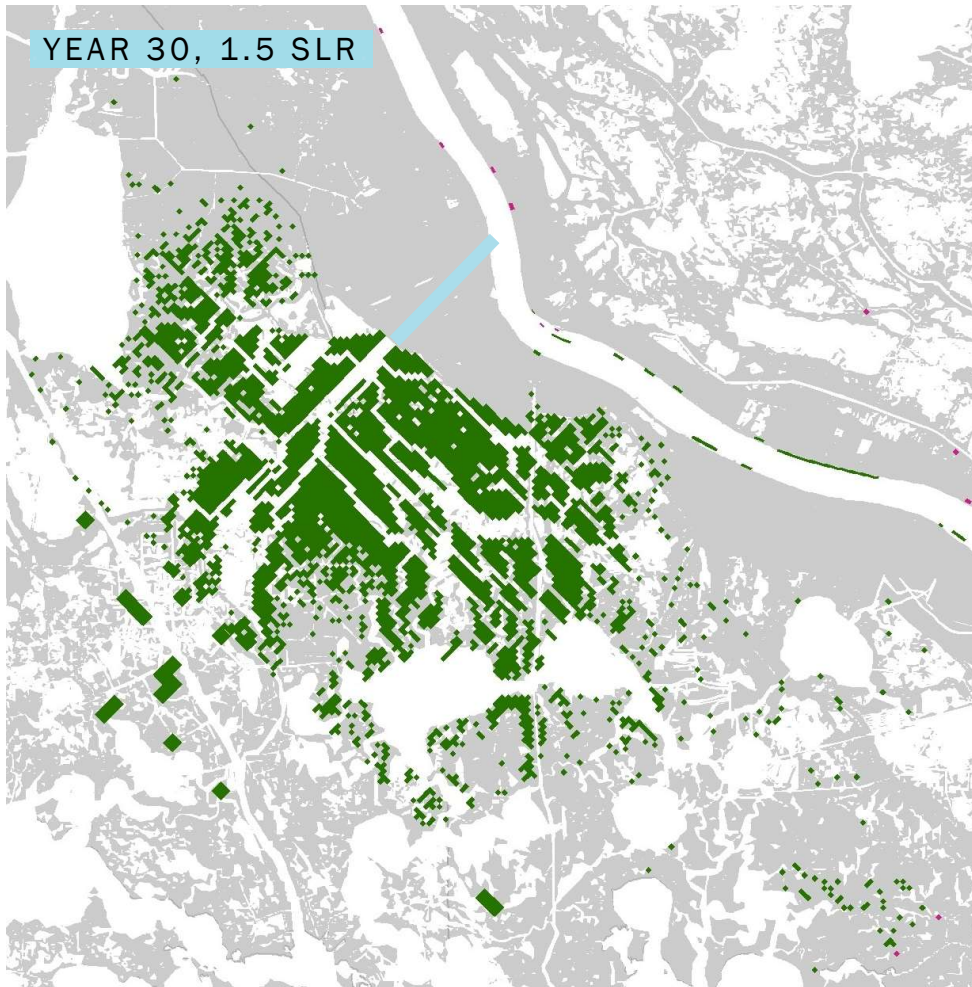
Will control/operate MBSD if built

LA TIG

Deciding authority on funding MBSD with *Deepwater Horizon* NRDA funds

Funding decision detailed in the Draft Restoration Plan

4 federal agencies, CPRA + 4 other state agencies



Land Building Capability

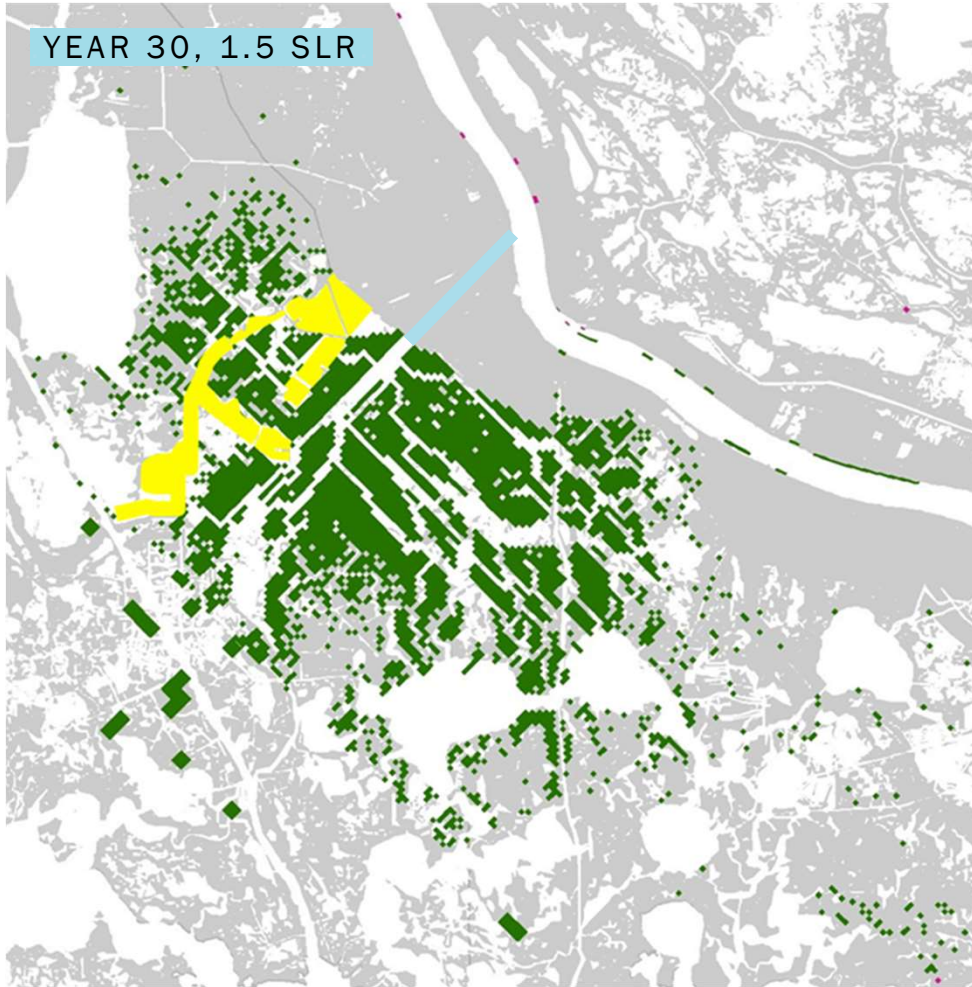
Barataria:

+17,300 acres at 30 yrs
+13,400 acres at 50 yrs

Represents 20% of the total remaining marsh in the Basin

Birdfoot Delta:

-2,000-3,000 acres



Marsh Creation Comparison

-  LARGE-SCALE DREDGING PROJECT
-  SEDIMENT DIVERSION

Economic Benefits

PLAQUEMINES, ST. BERNARD,
ORLEANS & JEFFERSON PARISHES

Benefits to local and state businesses, governments and residents due to construction of the project.

\$1.4 billion increase in sales

\$648 million increase in household earnings

Nearly 12,400 jobs

\$890 million in gross regional product



Other Project Benefits

AQUATIC SPECIES BENEFITS

- Large Mouth Bass (moderate benefit, including recreational fishery)
- Red Drum (moderate benefit, including recreational fishery)
- Gulf Menhaden (moderate benefit, including commercial fishery)
- Bay Anchovy (minor benefit, including commercial fishery)
- White Shrimp (negligible to minor benefit, including recreational and commercial fishery)
- Blue Crab (negligible to minor benefit, including recreational and commercial fishery)

MINOR TO MODERATE BENEFITS TO SOME TERRESTRIAL SPECIES

- Alligator
- Green-winged Teal
- Mottled Duck

RECREATIONAL USE BENEFITS

- Duck hunting
- Bird watching
- Recreational fishing (red drum and large mouth bass)

BENEFITS TO HABITAT (IN ADDITION TO WETLANDS)

- Submerged Aquatic Vegetation (SAV)
- Shallow bottom

BENEFITS TO THE NORTHERN GULF OF MEXICO ECOSYSTEM THROUGH TRANSPORT OF ENERGY FROM BARATARIA BASIN

Impacts & Mitigation

CPRA RESPONSIBLE FOR DEVELOPING MITIGATION PLAN TO ADDRESS NEGATIVE IMPACTS

DEIS IDENTIFIES IMPACTS TO COMMUNITIES SOUTH OF PROJECT, OUTSIDE FLOOD PROTECTION; BROWN SHRIMP, OYSTER, AND MARINE MAMMAL POPULATIONS

MITIGATION PLAN DEVELOPED IN COORDINATION WITH COMMUNITIES AND FISHERIES THROUGH ONGOING PUBLIC OUTREACH (IN-PERSON, VIRTUAL, SURVEY TOOL)

MITIGATION MEASURES IMPLEMENTED BEFORE, DURING, AND AFTER PROJECT OPERATION



Next Steps

ONGOING OUTREACH &
ENGAGEMENT TO IMPACTED
COMMUNITIES AND FISHERIES

REFINED MITIGATION PLAN

FINAL EIS ANTICIPATED FOR
RELEASED **SUMMER 2022**

RECORD OF DECISION
ANTICIPATED **FALL 2022**

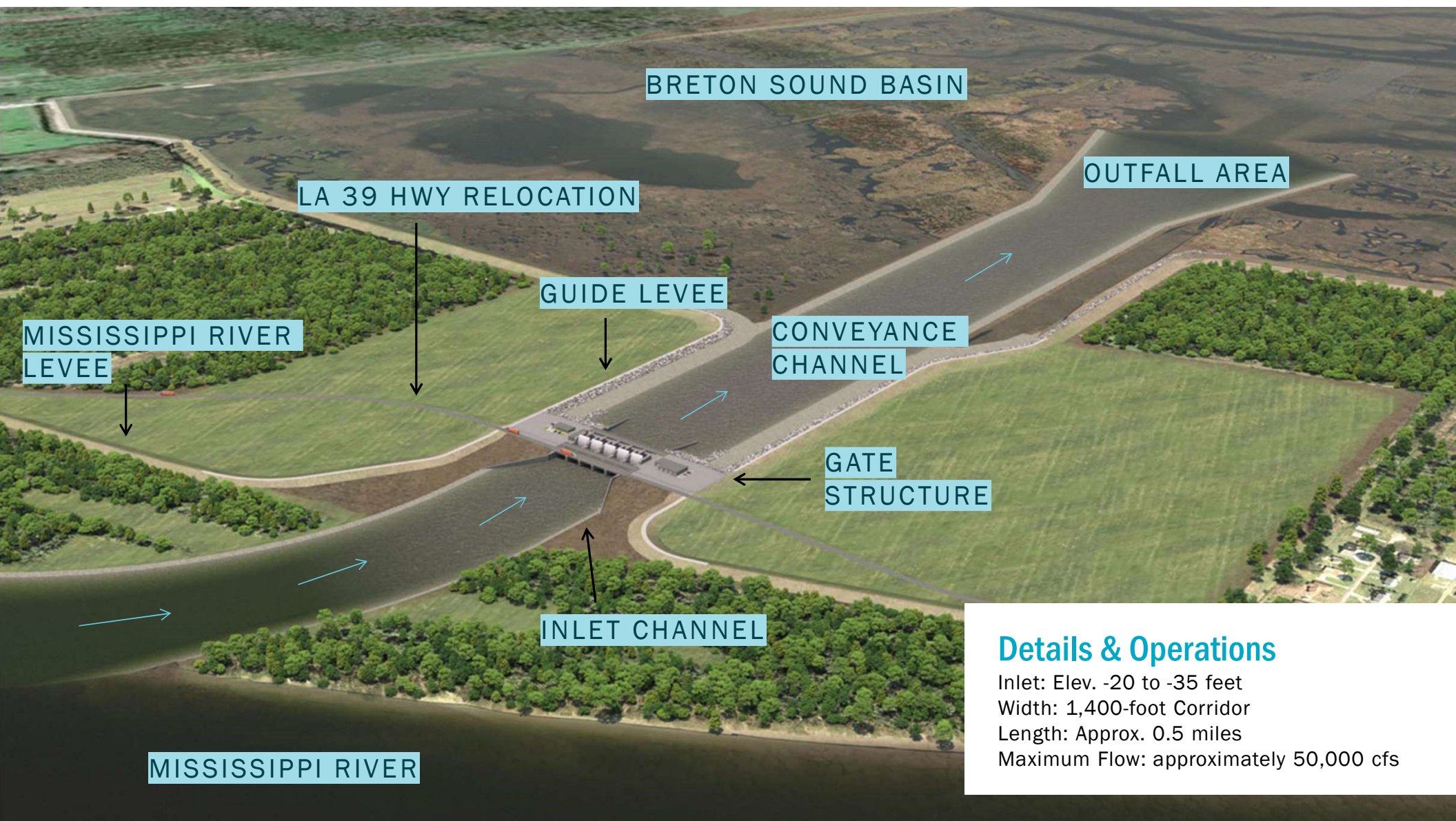
Mid-Breton Sediment Diversion





MID-BRETON

RIVER MILE 68
NEAR WILL'S POINT/
BERTRANDVILLE, LA



BRETON SOUND BASIN

OUTFALL AREA

LA 39 HWY RELOCATION

GUIDE LEVEE

CONVEYANCE CHANNEL

MISSISSIPPI RIVER LEVEE

GATE STRUCTURE

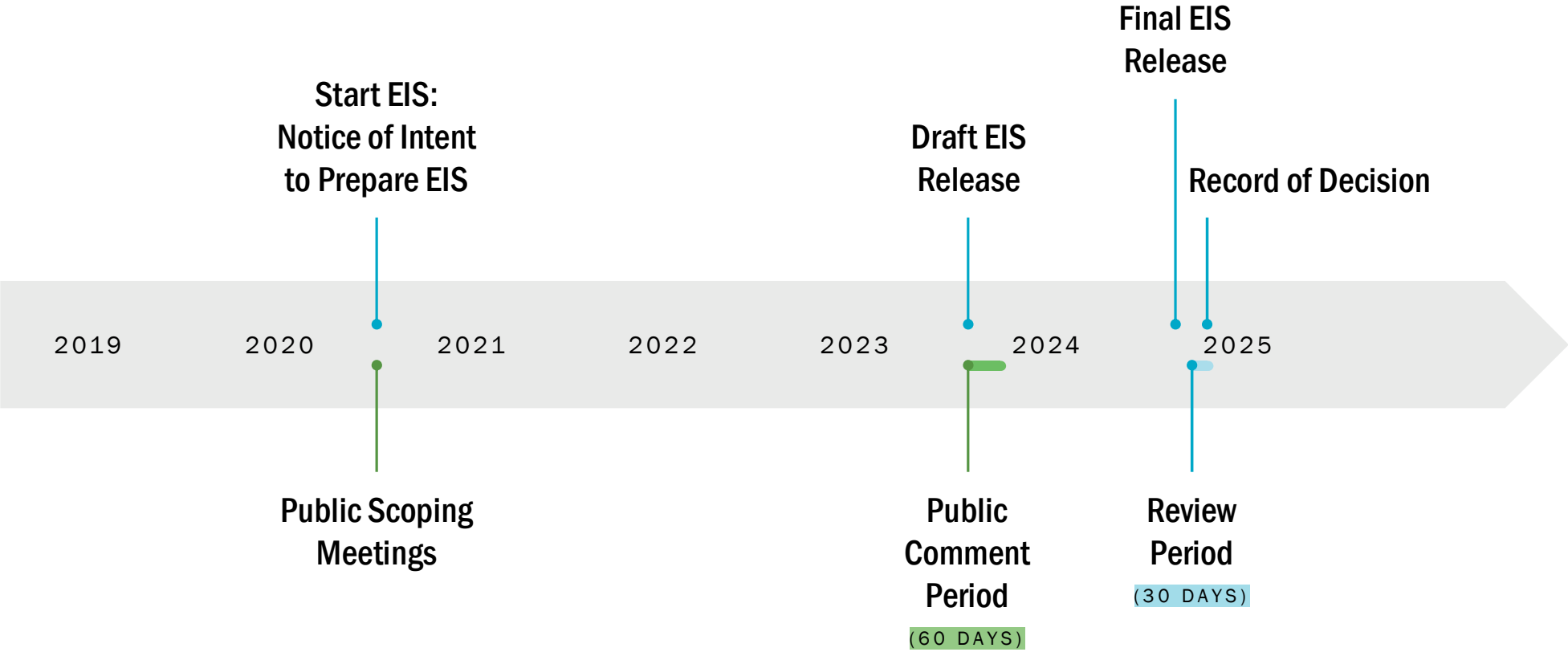
INLET CHANNEL

MISSISSIPPI RIVER

Details & Operations

- Inlet: Elev. -20 to -35 feet
- Width: 1,400-foot Corridor
- Length: Approx. 0.5 miles
- Maximum Flow: approximately 50,000 cfs

● OPPORTUNITY FOR PUBLIC INPUT



Mid-Breton Sediment Diversion

RECENT PROJECT
MILESTONES & UPDATES

30% PROJECT DESIGN UPDATE

PROJECT CAPACITY

UPDATED PROJECT TIMELINE

- Draft Environmental Impact Statement – expected 2023
- Final Environmental Impact Statement – expected 2024

Contracting Opportunities - CPRA

OVER 120 DIFFERENT CONTRACTORS/FIRMS CURRENTLY ENGAGED ON THE MID-BASIN DIVERSION PROGRAM

CONSTRUCTION:

- *2022 QTR 1 - RFQ for Mid-Barataria Construction Admin and Inspection Contract - ADVERTISED*
- *2023/2024 - RFQ for Mid-Breton Construction Admin and Inspection Contract*

Construction Opportunities

MID-BARATARIA SEDIMENT DIVERSION:

AWA – Archer Western – Alberici JV – Pre-construction/Design Phase CMAR

- *CMAR must sub-contract minimum of 30 % of the construction work*
- *Contracting Plan*
 - *Promote Local services, supplies, and materials*
 - *Outreach and Notification Opportunities*
 - *Prequalification*
 - *Selection*
- *Be Ready – Proper licensing, State Taxes, Safety Records*

Construction Opportunities

AWA – Archer Western – Alberici JV – Pre-construction/Design Phase CMAR

- *Potential Subcontract Work*
 - *Dewatering/Unwatering*
 - *Deep soil mixing*
 - *Wick Drain installation*
 - *Asphalt Paving and Markings*
 - *Fencing/Guardrails*
 - *Rock Riprap placement*
 - *Dredging*
 - *Earthwork (portion)*
 - *Electrical services – temporary and permanent Utilities*
 - *Reservation buildings*
 - *Reinforcing steel installation*
 - *Rail Road Track Work*
 - *Landscape / Seeding*
 - *Transport & Trucking Services*

APRIL 1, 2022

Questions?

BRAD BARTH, PROGRAM MANAGER / BRADLEY.BARTH@LA.GOV

